

MPS Catalog Number:

S1 40 90 078 MA AL 051

Date:

01/23/2014

END FITTINGS

Tower End Fitting:

Y-Clevis (Forged Steel)

Line End Fitting:

Eye (Forged Steel)

MATERIAL

Corona Ring (Tower):

None

Corona Ring (Line):

8" Corona Ring

Corona Rings are recommended for applications of 230 kV and above

Number of Sheds:

25 large 26 standard

Rod Diameter:

16 mm

Weight Estimate:

17.4 lbs

7.9 kg

DIMENSIONAL VALUES

Section Length (L):

91.6 in

2,327 mm

Rubber Length (X):

78.3 in

1,989 mm

Standard Shed Height (P1):

1.5 in

38 mm

Large Shed Height (P2):

2 in

51 mm

Projection Ratio (S/P):

-

1.5

Shed Spacing (S):

3 in

76 mm

Dry Arc Distance:

78.1 in

1,984 mm

Leakage Distance:

231.6 in

5,883 mm

ELECTRICAL VALUES

60 Hz Dry Flashover:

758 kV

Min. Withstand:

686 kV

60 Hz Wet Flashover:

651 kV

Min. Withstand:

567 kV

Pos. Critical Impulse Flashover:

1,264 kV

Min. Withstand:

1,125 kV

Neg. Critical Impulse Flashover:

1,323 kV

Min. Withstand:

1,183 kV

MECHANICAL VALUES

Specified Mech. Load (SML):

25,000 lbs

111.2 kN

Routine Test Load (RTL):

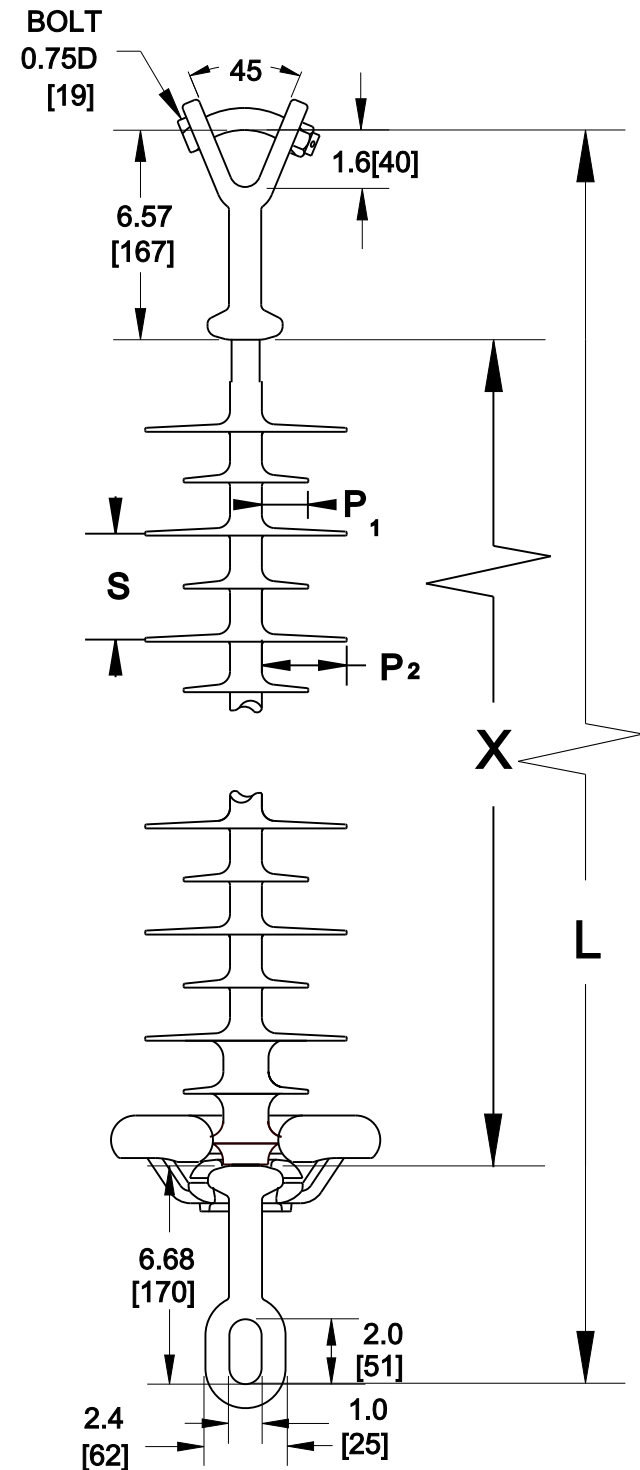
12,500 lbs

55.6 kN

This drawing contains confidential information that is property of MacLean Power L.L.C ('MacLean'). Use of MacLean's confidential information without MacLean's express written consent is strictly prohibited and may expose you to legal liability. If you believe that you received this material in error, please destroy it or return it to 'MacLean Power, L.L.C., 7801 Park Place Rd, York, SC, 29745, USA.'

Dimensions: inches [millimeters]

Note: Drawing not actual depiction of insulator appearance



Silicone Rubber Sheath & Sheds
Complies with applicable ANSI and IEC standards.